



#### LEGEND

- Torres Shire Boundary
- Area Within Torres Shire
- Area Outside Torres Shire
- Ocean/Waterbody/Watercourse

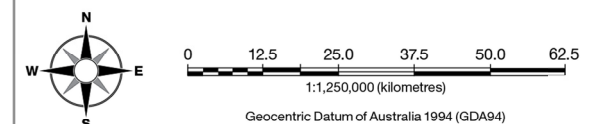
#### Information

Whilst every care is taken to ensure the accuracy of this product, neither the Torres Shire Council or the State of Queensland make any representations or warranties about its accuracy, reliability, completeness or suitability for any particular purpose and disclaims all responsibility and all liability (including without limitation, liability in negligence) for all expenses, losses, damages (including indirect or consequential damage) and costs that may occur as a result of the product being inaccurate or incomplete in any way or for any reason. All data depicted on this map has been sourced from either the Torres Shire Council or the State of Queensland from the latest datasets available at the time of map compilation. Crown & Council Copyright Reserved.

Map compilation date: January 2020.

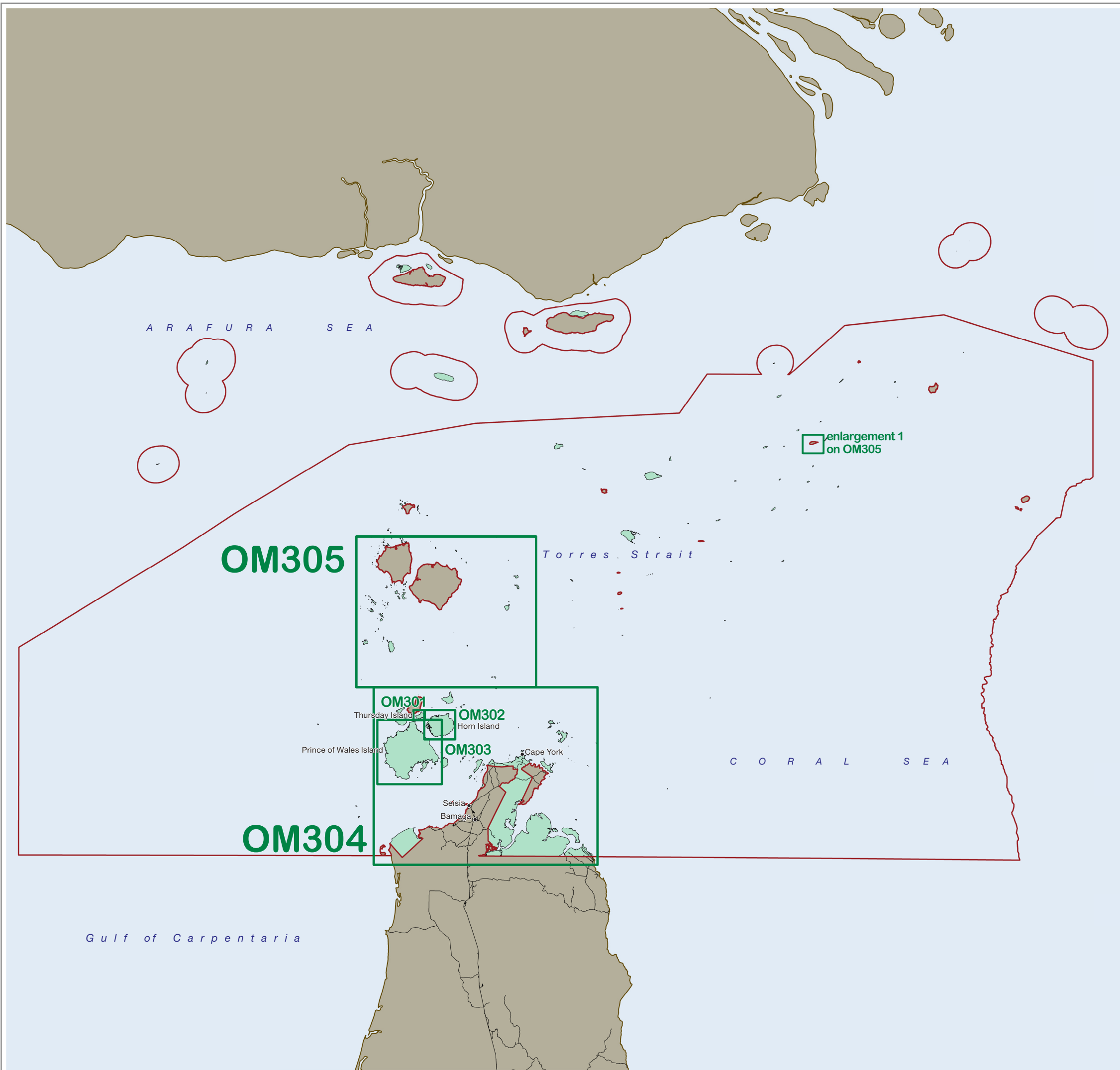
#### Note

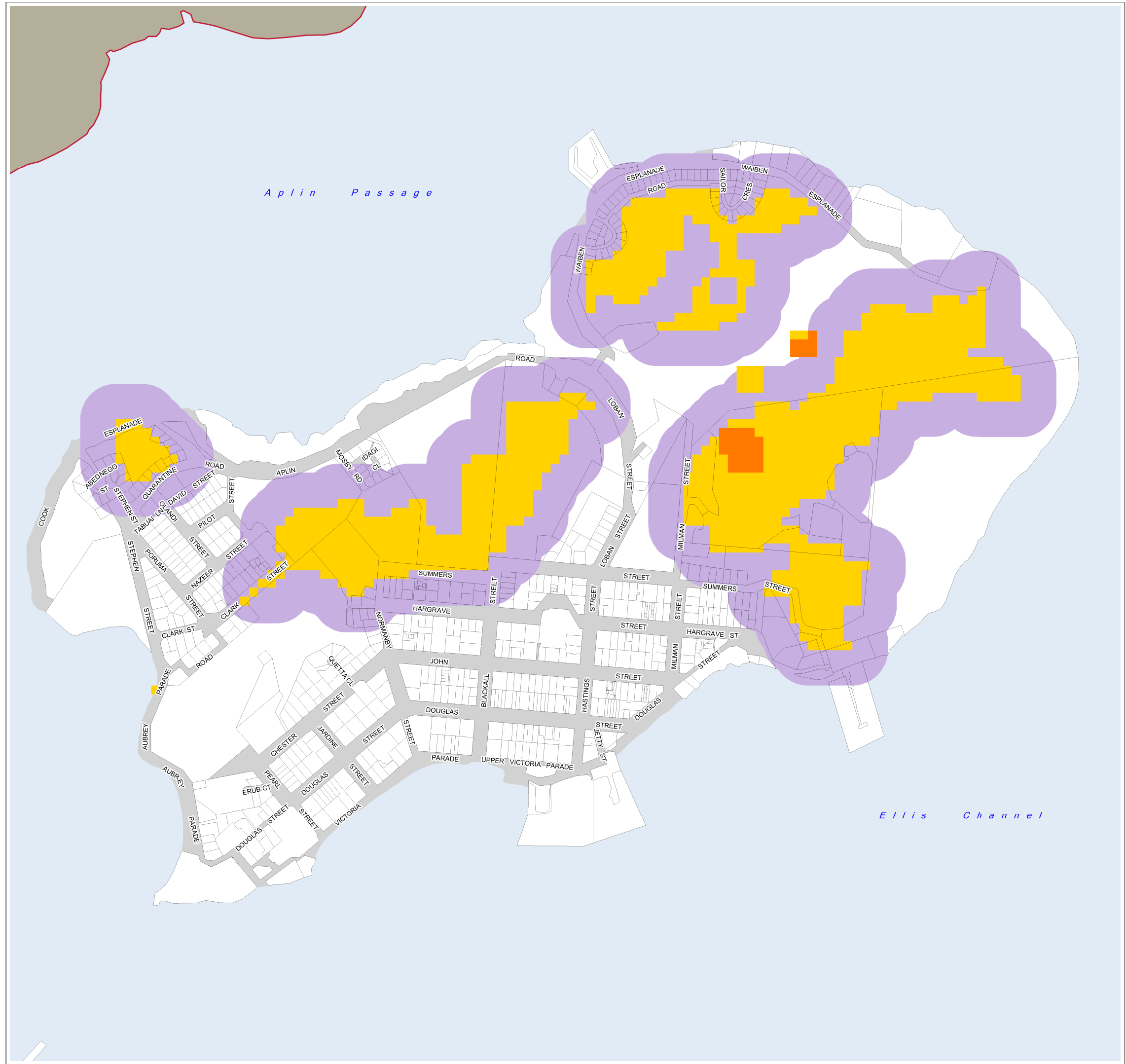
Where information on the map is obscured by text or other map elements contact Torres Shire Council for a determination.



## Overlay Map- Bushfire Hazard Overlay Index Map

OVERLAY MAP - OM300





#### LEGEND

##### Bushfire Hazard

- Very High Potential Bushfire Intensity
- High Potential Bushfire Intensity
- Medium Potential Bushfire Intensity
- Potential Impact Buffer (100 metres)

##### Other Elements

- Cadastre
- Ocean/Waterbody/Watercourse
- Road
- Torres Shire Boundary
- Area Outside Torres Shire

#### Data Source

The Bushfire Hazard datasets depicted on this map has been sourced from: Cardno 2020.  
Publication date: 18/05/2020.

#### Information

Whilst every care is taken to ensure the accuracy of this product, neither the Torres Shire Council or the State of Queensland make any representations or warranties about its accuracy, reliability, completeness or suitability for any particular purpose and disclaims all responsibility and all liability (including without limitation, liability in negligence) for all expenses, losses, damages (including indirect or consequential damage) and costs that may occur as a result of the product being inaccurate or incomplete in any way or for any reason. All data depicted on this map has been sourced from either the Torres Shire Council or the State of Queensland from the latest datasets available at the time of map compilation. Crown and Council Copyright Reserved.

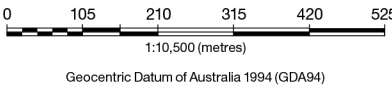
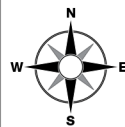
Map compilation date: July 2020.

#### Note

Where information on the map is obscured by text or other map elements contact Torres Shire Council for a determination.

#### Map Index

Refer to Overlay Map OM-300 for the Bushfire Hazard Overlay Map Index.



# Overlay Map- Bushfire Hazard Overlay Thursday Island

OVERLAY MAP - OM301



## LEGEND

### Bushfire Hazard

- Very High Potential Bushfire Intensity
- High Potential Bushfire Intensity
- Medium Potential Bushfire Intensity
- Potential Impact Buffer (100 metres)

### Other Elements

- Cadastre
- Ocean/Waterbody/Watercourse
- Road
- Torres Shire Boundary
- Area Outside Torres Shire

### Data Source

The Bushfire Hazard datasets depicted on this map has been sourced from: Cardno 2020.  
Publication date: 18/05/2020.

### Information

Whilst every care is taken to ensure the accuracy of this product, neither the Torres Shire Council or the State of Queensland make any representations or warranties about its accuracy, reliability, completeness or suitability for any particular purpose and disclaims all responsibility and all liability (including without limitation, liability in negligence) for all expenses, losses, damages (including indirect or consequential damage) and costs that may occur as a result of the product being inaccurate or incomplete in any way or for any reason. All data depicted on this map has been sourced from either the Torres Shire Council or the State of Queensland from the latest datasets available at the time of map compilation. Crown and Council Copyright Reserved.

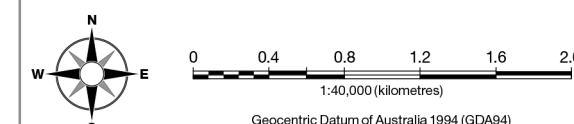
Map compilation date: July 2020.

### Note

Where information on the map is obscured by text or other map elements contact Torres Shire Council for a determination.

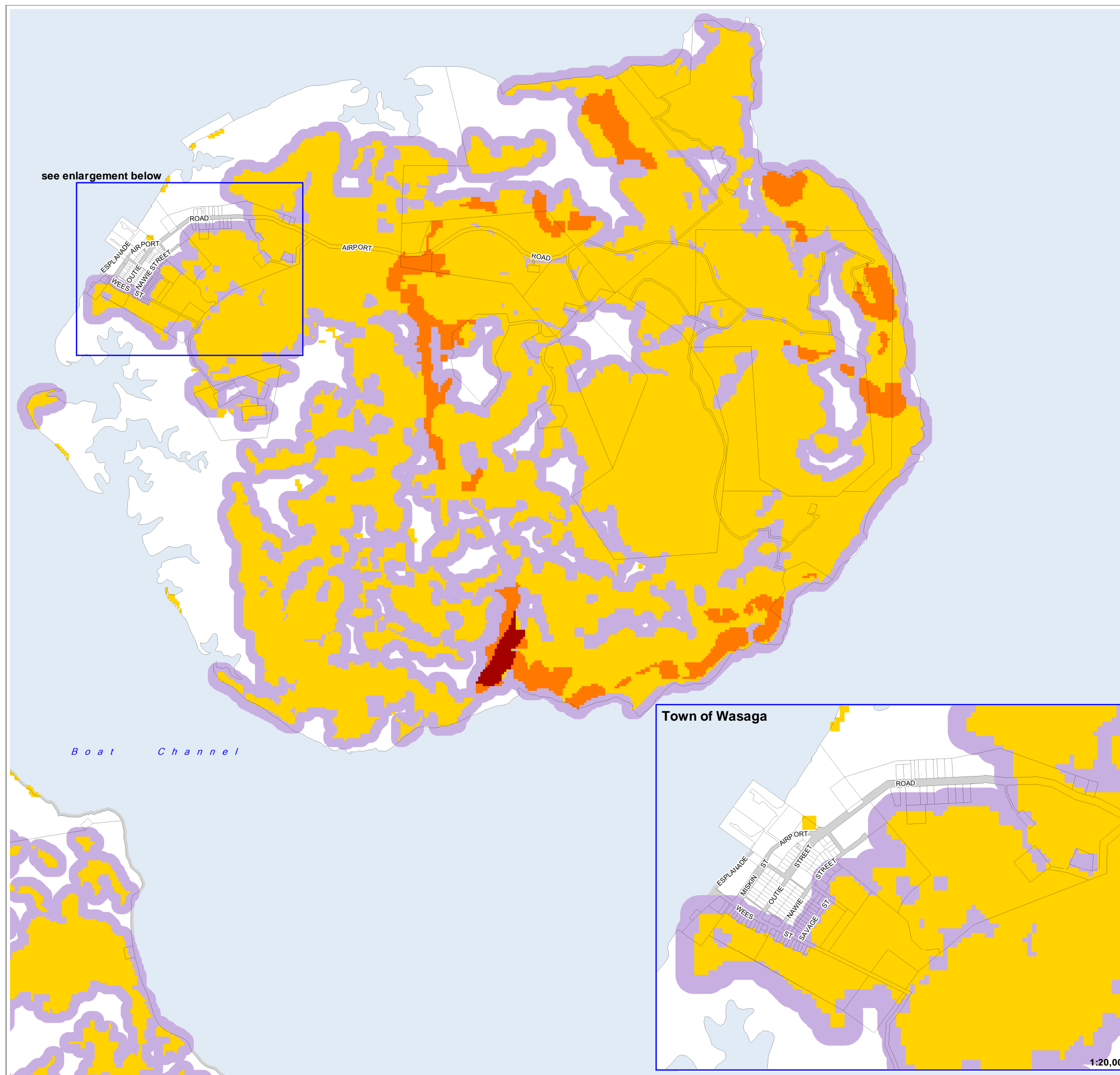
### Map Index

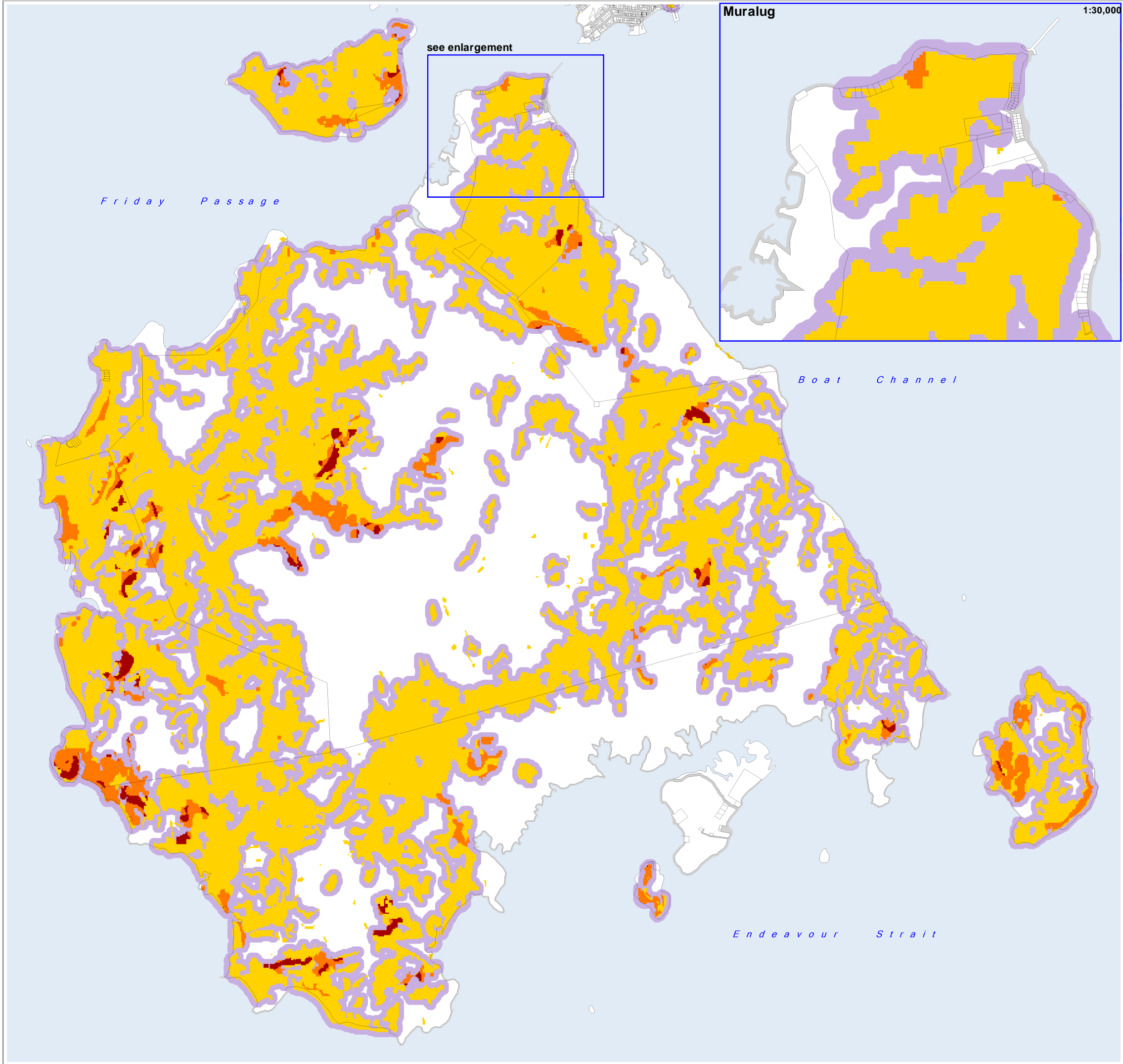
Refer to Overlay Map OM-300 for the Bushfire Hazard Overlay Map Index.



# Overlay Map- Bushfire Hazard Overlay Horn Island

OVERLAY MAP - OM302





**LEGEND**

**Bushfire Hazard**

- Very High Potential Bushfire Intensity
- High Potential Bushfire Intensity
- Medium Potential Bushfire Intensity
- Potential Impact Buffer (100 metres)

**Other Elements**

- Cadastral
- Ocean/Waterbody/Watercourse
- Road
- Torres Shire Boundary
- Area Outside Torres Shire

**Data Source**

The Bushfire Hazard datasets depicted on this map has been sourced from: Cardno 2020.  
Publication date: 18/05/2020.

**Information**

Whilst every care is taken to ensure the accuracy of this product, neither the Torres Shire Council or the State of Queensland make any representations or warranties about its accuracy, reliability, completeness or suitability for any particular purpose and disclaims all responsibility and all liability (including without limitation, liability in negligence) for all expenses, losses, damages (including indirect or consequential damage) and costs that may occur as a result of the product being inaccurate or incomplete in any way or for any reason. All data depicted on this map has been sourced from either the Torres Shire Council or the State of Queensland from the latest datasets available at the time of map compilation. Crown and Council Copyright Reserved.

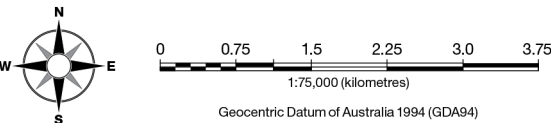
Map compilation date: July 2020.

**Note**

Where information on the map is obscured by text or other map elements contact Torres Shire Council for a determination.

**Map Index**

Refer to Overlay Map OM-300 for the Bushfire Hazard Overlay Map Index.



# Overlay Map- Bushfire Hazard Overlay Prince of Wales Island





#### LEGEND

##### Bushfire Hazard

- Very High Potential Bushfire Intensity
- High Potential Bushfire Intensity
- Medium Potential Bushfire Intensity
- Potential Impact Buffer (100 metres)

##### Other Elements

- Cadastre
- Ocean/Waterbody/Watercourse
- Road
- Torres Shire Boundary
- Area Outside Torres Shire

##### Data Source

The Bushfire Hazard datasets depicted on this map has been sourced from:  
State of Queensland (Queensland Fire and Emergency Services) 2018.  
Data used: Bushfire Prone Area - Cape York.  
Publication date: 15/07/2015.

##### Information

Whilst every care is taken to ensure the accuracy of this product, neither the Torres Shire Council or the State of Queensland make any representations or warranties about its accuracy, reliability, completeness or suitability for any particular purpose and disclaims all responsibility and all liability (including without limitation, liability in negligence) for all expenses, losses, damages (including indirect or consequential damage) and costs that may occur as a result of the product being inaccurate or incomplete in any way or for any reason. All data depicted on this map has been sourced from either the Torres Shire Council or the State of Queensland from the latest datasets available at the time of map compilation. Crown & Council Copyright Reserved.

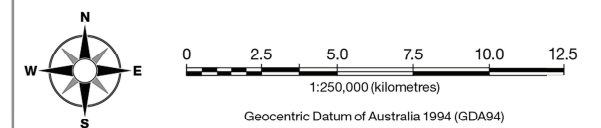
Map compilation date: January 2020.

##### Note

Where information on the map is obscured by text or other map elements contact Torres Shire Council for a determination.

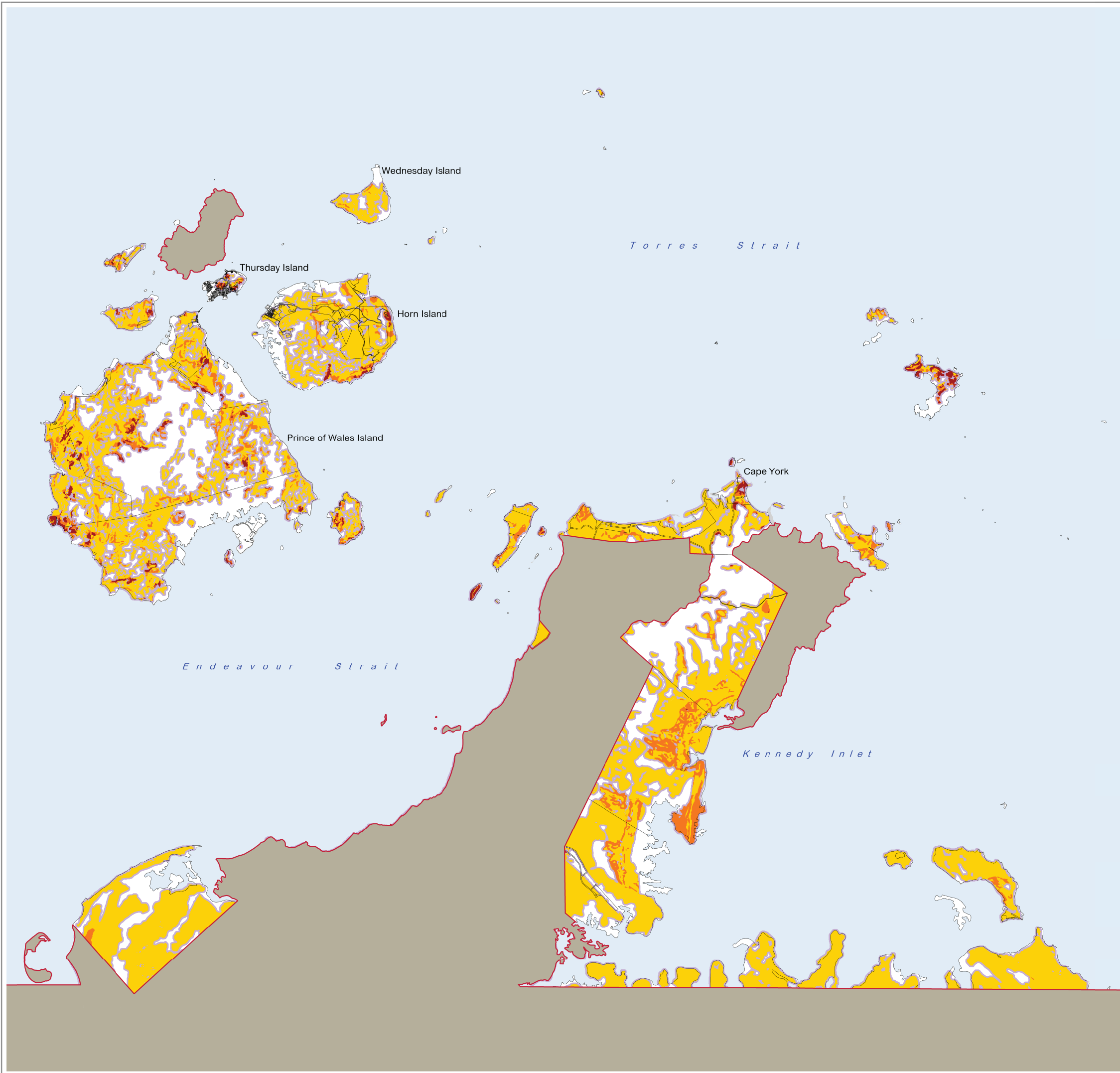
##### Map Index

Refer to Overlay Map OM-300 for the Bushfire Hazard Overlay Map Index.



## Overlay Map- Bushfire Hazard Overlay Southern Region

OVERLAY MAP - OM304





#### LEGEND

##### Bushfire Hazard

- Very High Potential Bushfire Intensity
- High Potential Bushfire Intensity
- Medium Potential Bushfire Intensity
- Potential Impact Buffer (100 metres)

##### Other Elements

- Cadastre
- Ocean/Waterbody/Watercourse
- Road
- Torres Shire Boundary
- Area Outside Torres Shire

##### Data Source

The Bushfire Hazard datasets depicted on this map has been sourced from:  
State of Queensland (Queensland Fire and Emergency Services) 2018.  
Data used: Bushfire Prone Area - Cape York.  
Publication date: 15/07/2015.

##### Information

Whilst every care is taken to ensure the accuracy of this product, neither the Torres Shire Council or the State of Queensland make any representations or warranties about its accuracy, reliability, completeness or suitability for any particular purpose and disclaims all responsibility and all liability (including without limitation, liability in negligence) for all expenses, losses, damages (including indirect or consequential damage) and costs that may occur as a result of the product being inaccurate or incomplete in any way or for any reason. All data depicted on this map has been sourced from either the Torres Shire Council or the State of Queensland from the latest datasets available at the time of map compilation. Crown & Council Copyright Reserved.

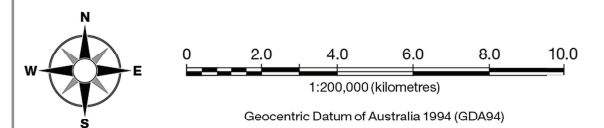
Map compilation date: January 2020.

##### Note

Where information on the map is obscured by text or other map elements contact Torres Shire Council for a determination.

##### Map Index

Refer to Overlay Map OM-300 for the Bushfire Hazard Overlay Map Index.



## Overlay Map- Bushfire Hazard Overlay Northern Region

OVERLAY MAP - OM305

